

# TAX LEGAL SERVICES

Tax Consulting South Africa has a specialist team of tax attorneys, chartered accountants and tax professionals who provide support on complex matters to taxpayers and their professional advisors. The aspect that makes our team unique is that our diverse skill-set enables us to consider tax matters from all perspectives, providing turn-key solutions to your clients.

## Our Services Include:

### SARS ENGAGEMENT

- Disputes
- Tax Debts
- VDP
- Other:
  - VAT Refunds
  - Audits
  - 11(4) Letters

### SA ENTITY & INBOUND EXPATS OR EMPLOYMENT LEGAL & TAX

- Employment Agreement
- Foreign entity – SARB Approval
- Commercial Agreement
- Advisory

### BUSINESS SET UP & ADVISORY IN AFRICA CIPC

- Foreign Partner Exchange
- All other service lines

### OFFSHORE STRUCTURES & HNWI STRATEGY

- HNWI Plan B / Offshore
- HNWI Emigration Strategy
- HNI Business Expansion/Offshore Family Office

### OUTBOUND EXPATRIATE TAX

- Double Taxation Agreement (DTAs)
- Advisory

### EMPLOYMENT & PAYE TAX

- Employment Agreement
- Opinions
- Dual Employment Strategy

### TAX & EXCHANGE CONTROL ADVISORY

- PAYE/Employees
- Expat Tax and Treaties
- Cross-Border Tax
- VAT
- Income Tax / CGT
- Corporate Restructure
- SARB / Exchange Control
- Trusts Tax & Trustee Obligations

### MOBILITY

- Mobile Employees

### OTHER

- Trusts
- SARB / Excon
- Commercial

# OUR TEAM



## DARREN BRITZ

Partner and Head of Tax Legal  
*(Admitted Attorney of the High Court of South Africa)*



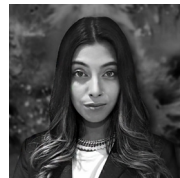
## ANDRÉ DANIELS

Head of Tax Controversy & Dispute Resolution  
*Admitted Attorney, LLB*



## JASHWIN BAIJOO

Head of Strategic Engagement & Compliance  
*Admitted Attorney, LLB, LLM (Tax)  
Professional Tax Specialist (SA)*



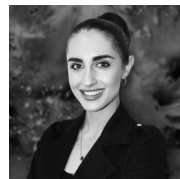
## RALITZA PILLAY

Mobility Manager  
*Global Mobility and Compliance*



## DELANO ABDOLL

Legal Manager: Cross-Border Taxation  
*Admitted Attorney, BA (Law), LLB, LLM*



## COLLEEN KAUFMANN

Tax Attorney  
*Admitted Attorney, LLB*



## BRONWIN HUMAN

Tax Attorney  
*Admitted Attorney, LLB*



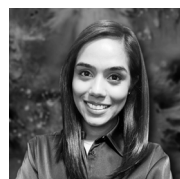
## MICAELA PASCHINI

Tax Attorney  
*Admitted Attorney, LLB*



## KIMENTHA PATHER

Tax and Legal Associate  
*LLB*



## KIVASHNA VEERASAMY

Tax Attorney  
*Admitted Attorney, LLB, PGC (Cyberlaw)*



## RICHAN SCHWELLNUS

Tax Associate



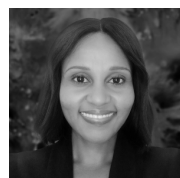
## SAINITA PADAYACHY

Client Engagement Specialist



## GABRIELLE KAUFMANN

Client Engagement Specialist  
*Global Mobility and Compliance*



## THANDO NTULI

Legal Administrator





*The team that broadens your service line to ensure that your clients' tax needs and obligations are taken care of.*

Tax



+27 11 467 0810  
contact@taxconsulting.co.za  
www.taxconsulting.co.za